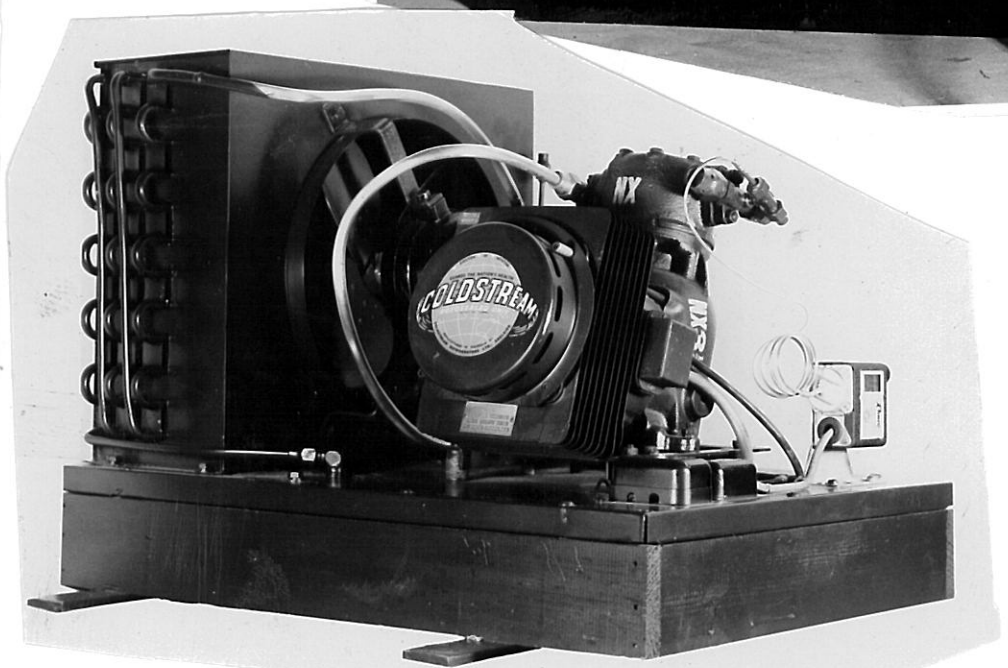
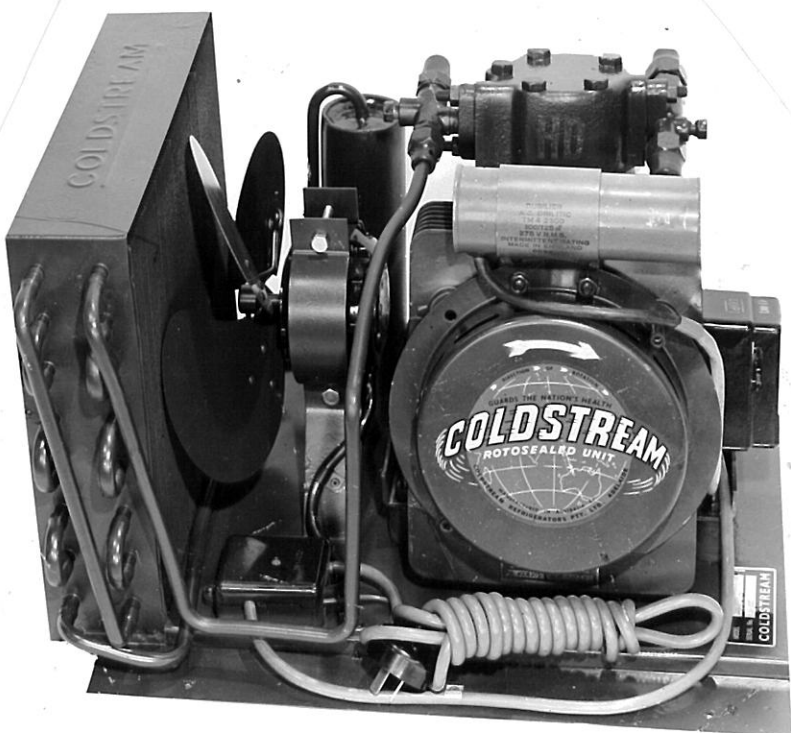
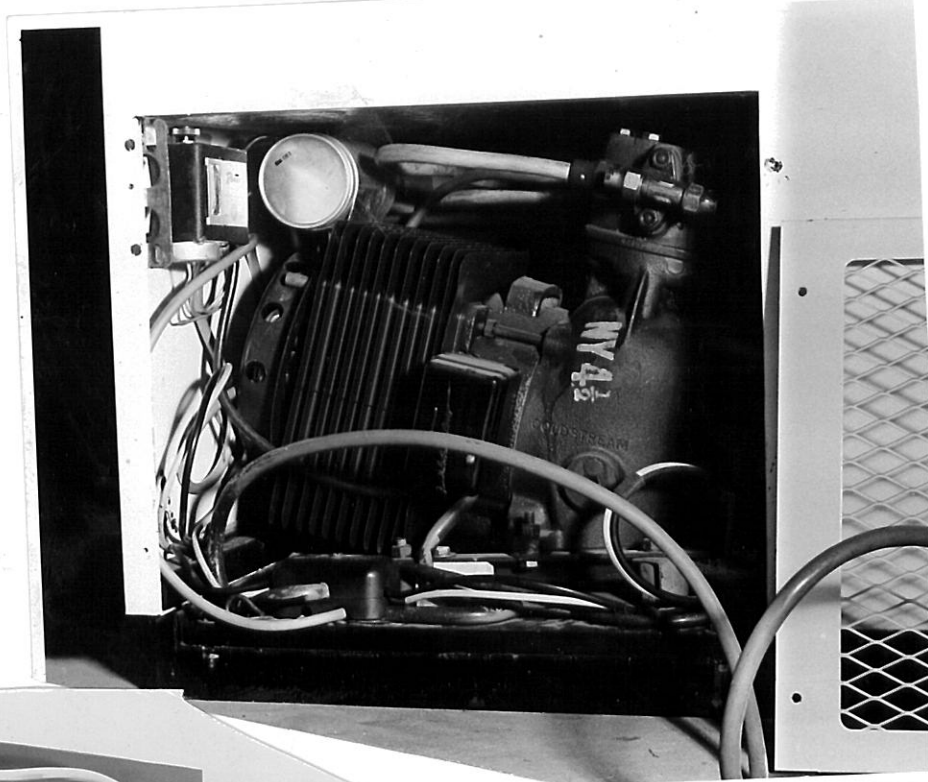
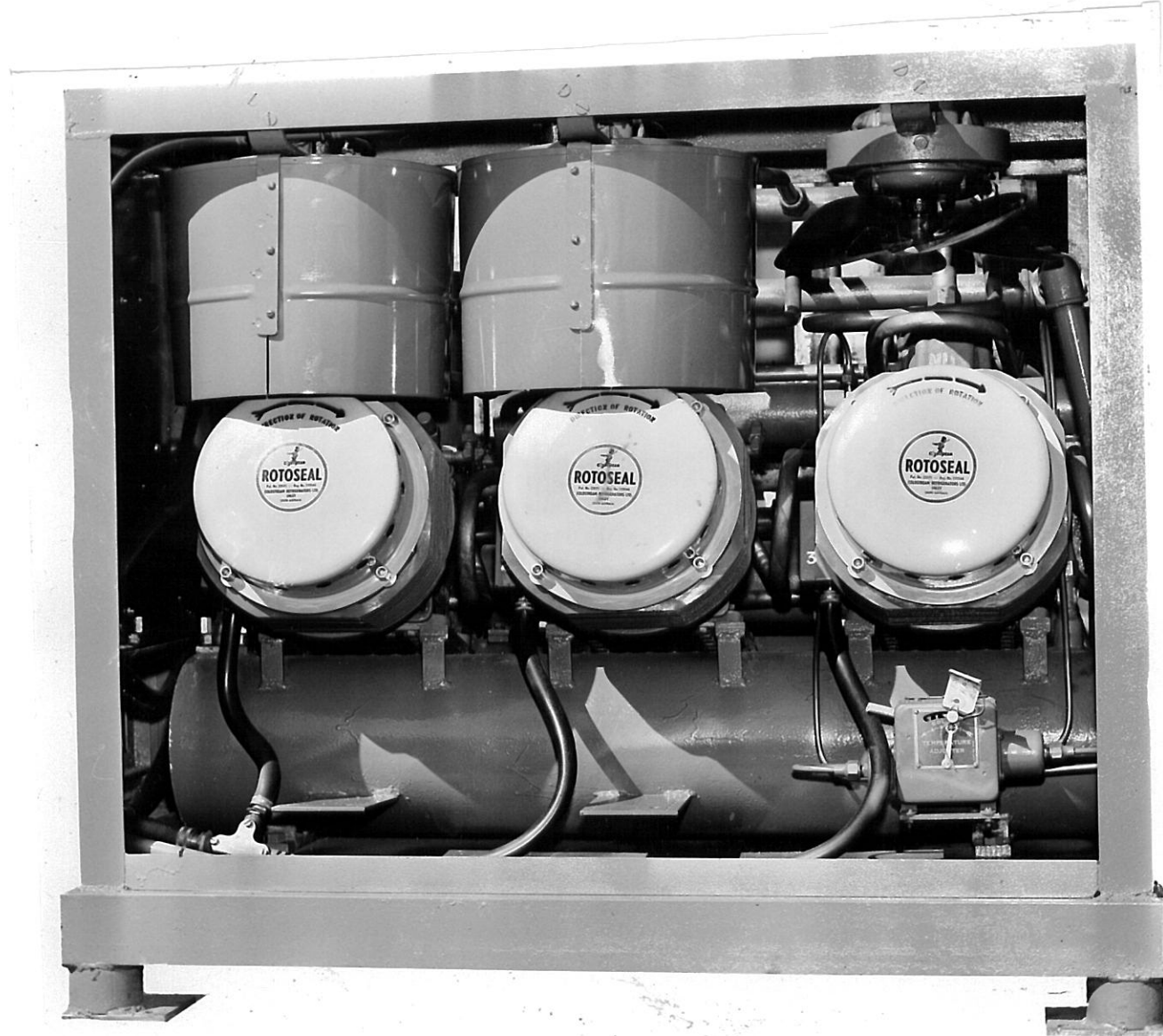
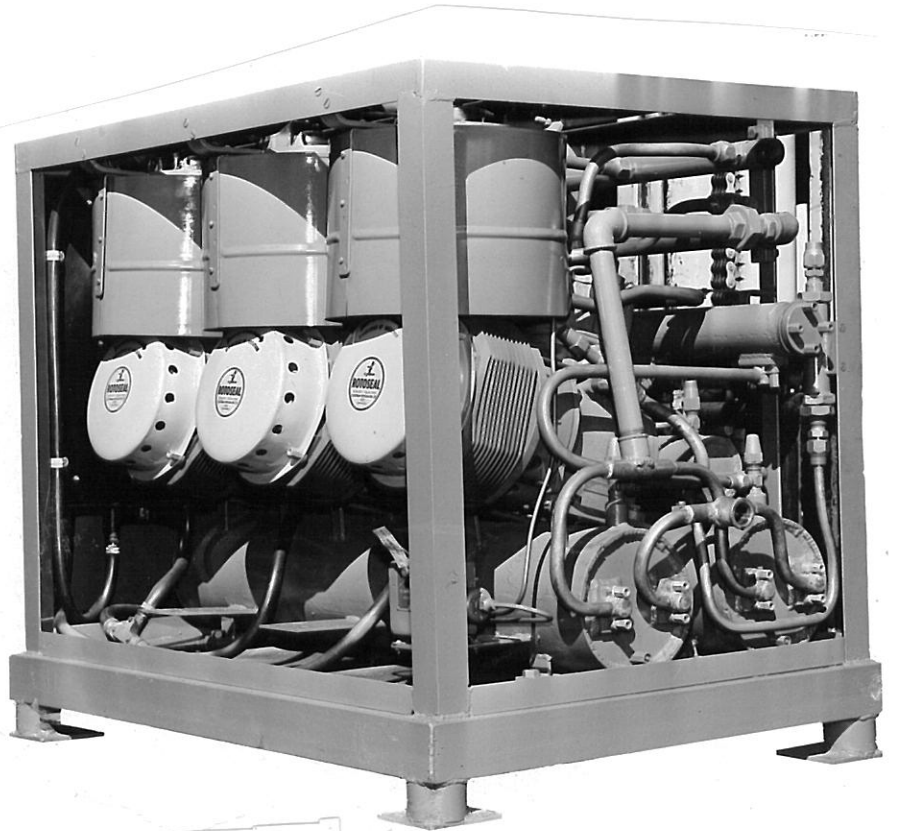
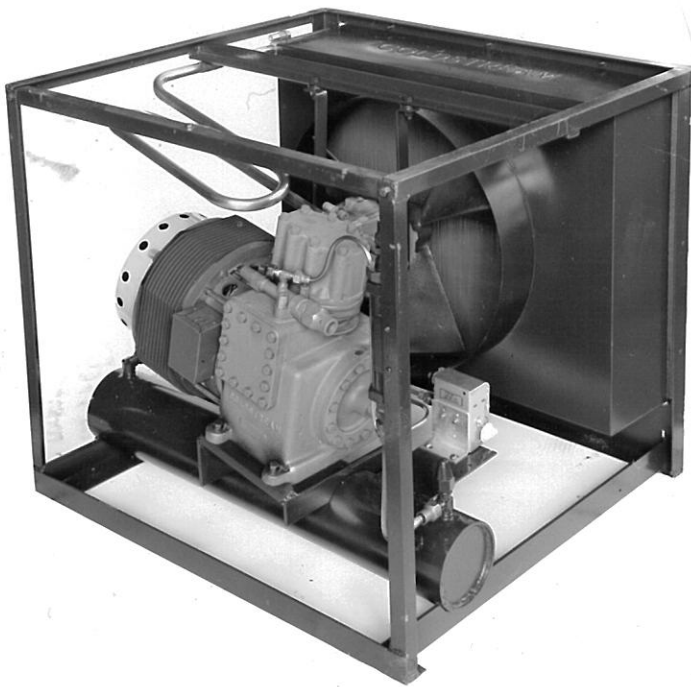
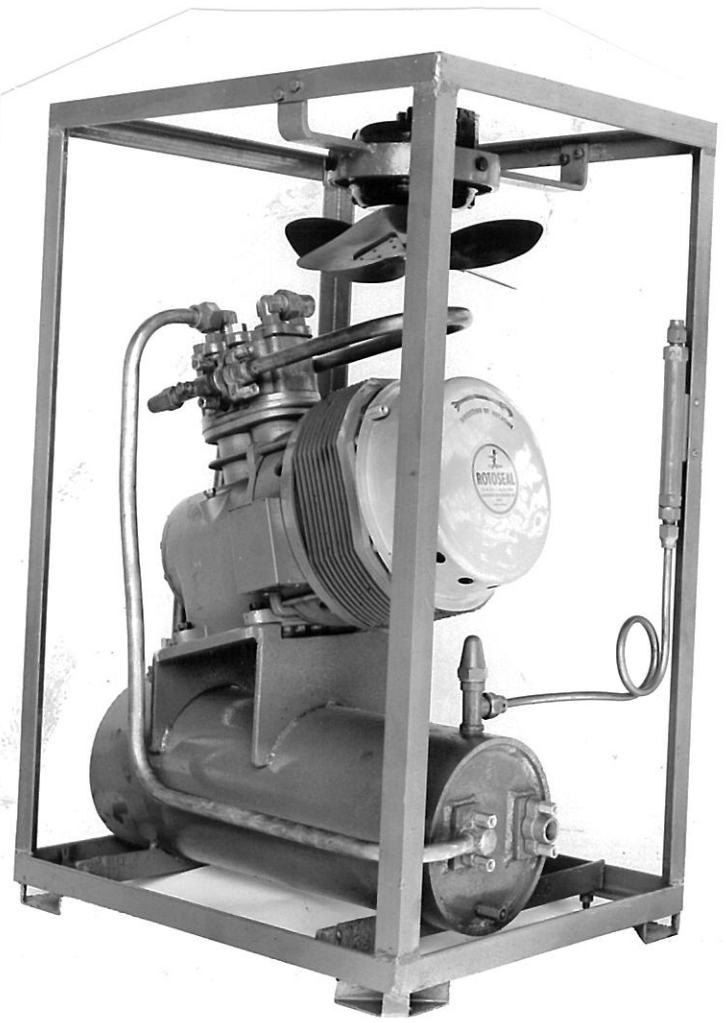
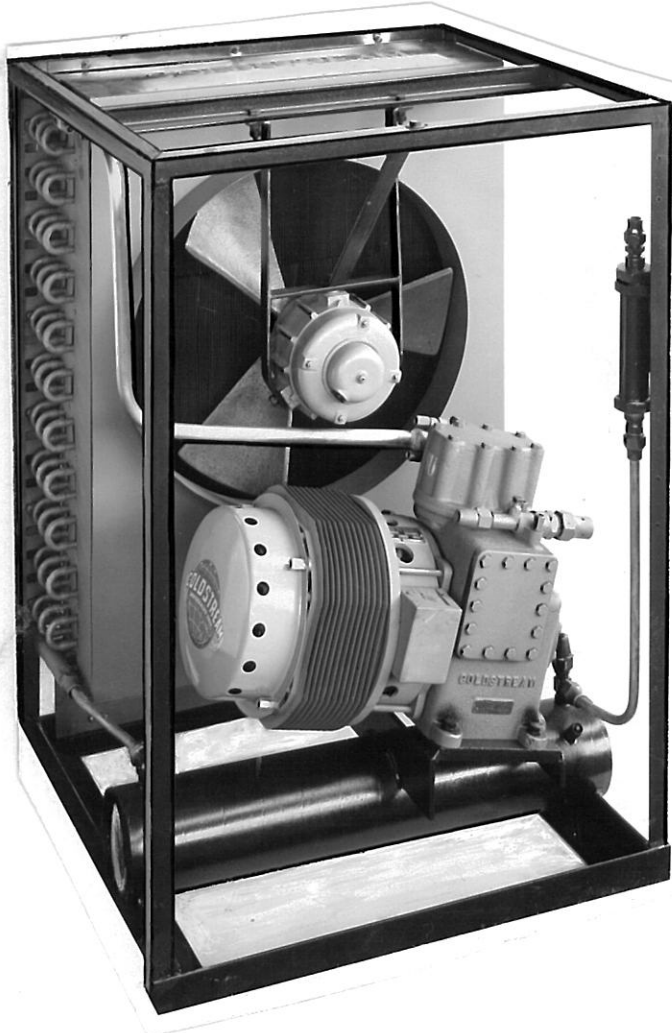


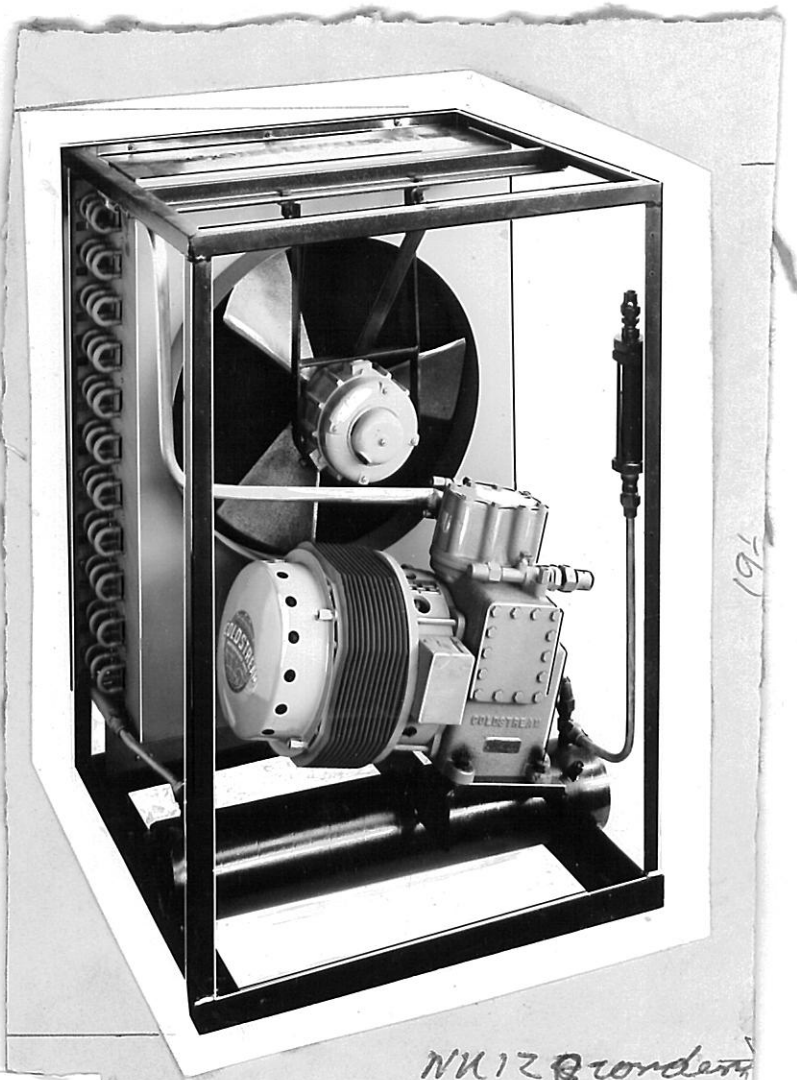
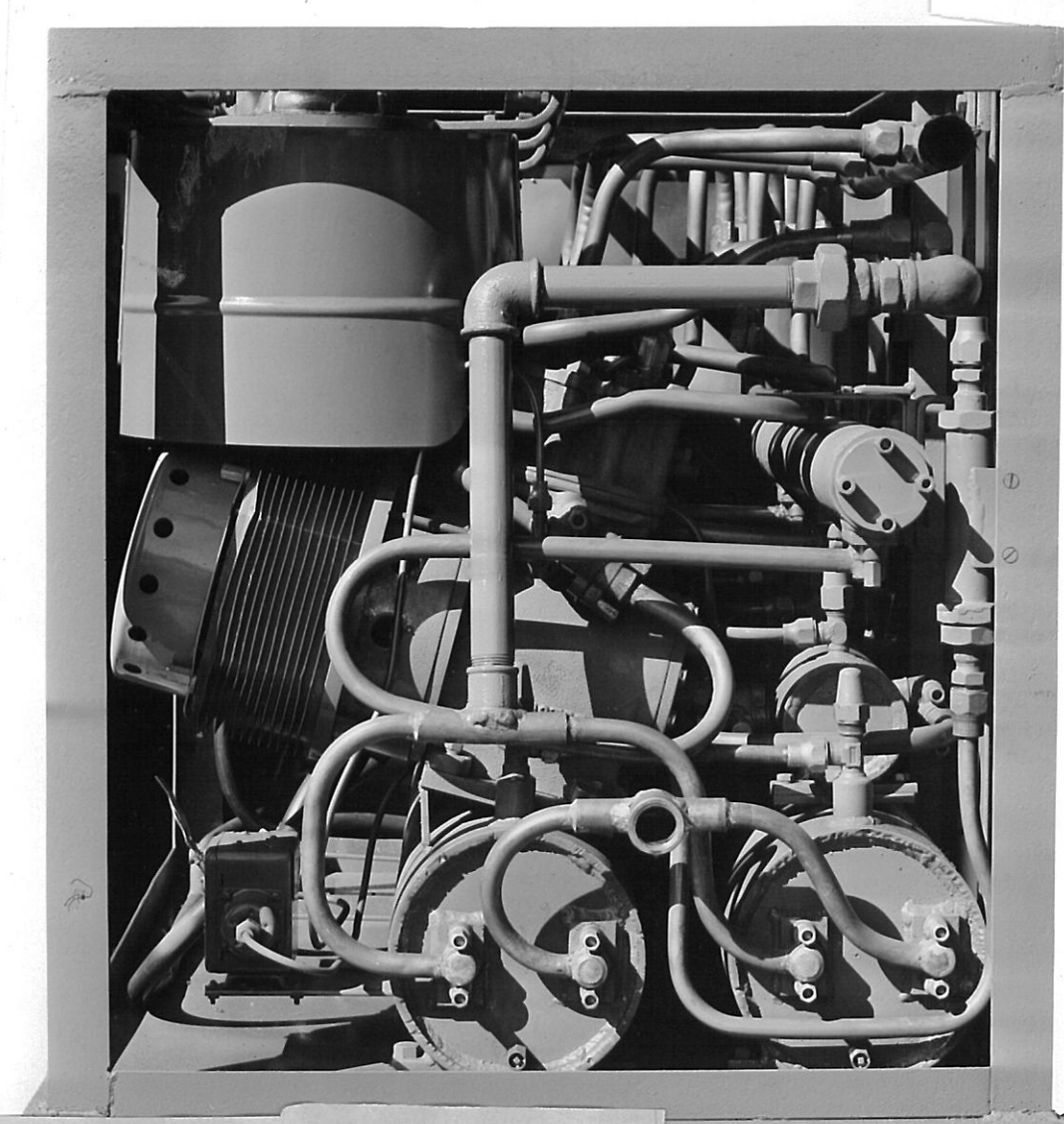
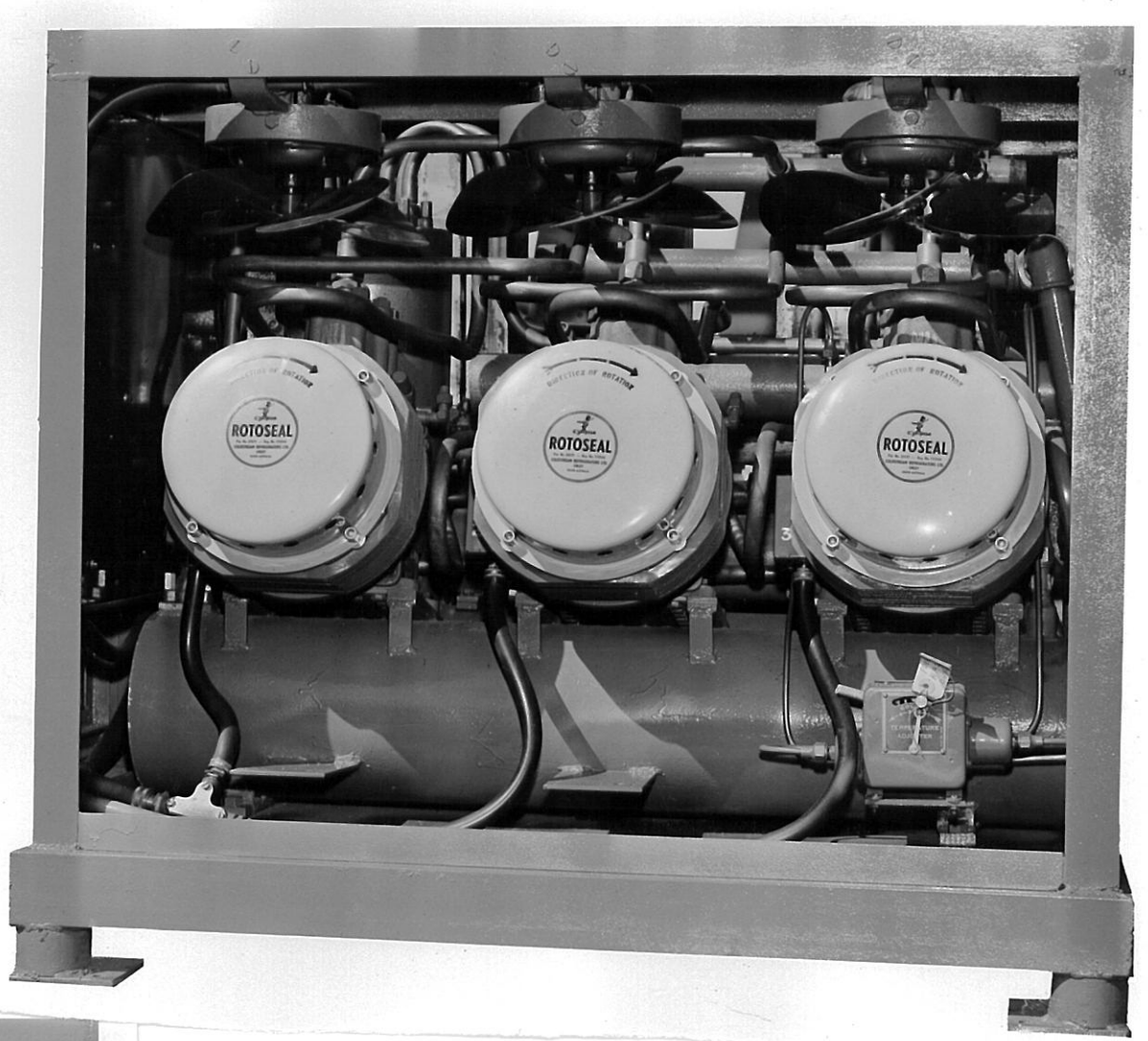
DEFROST WATER DISPOSAL ON COLDSTREAM  
CY150 CONDENSING UNIT



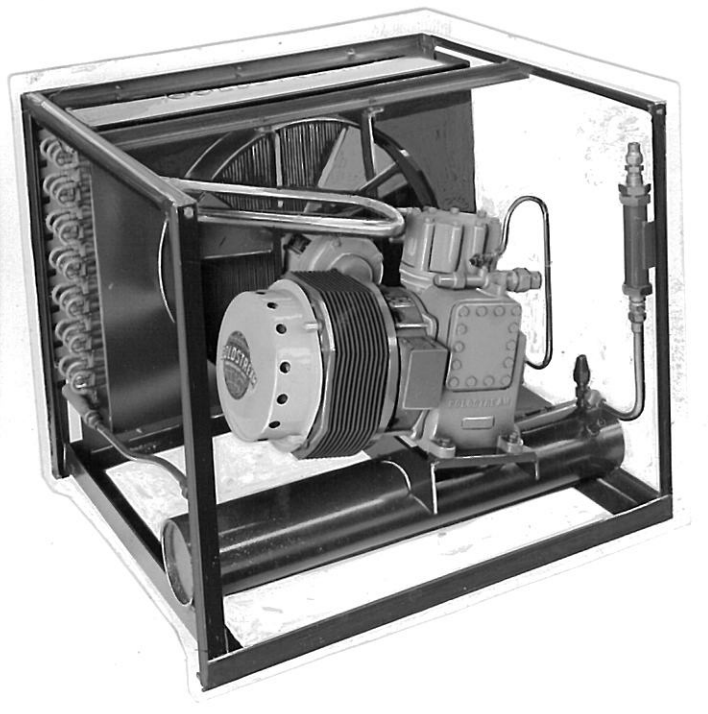
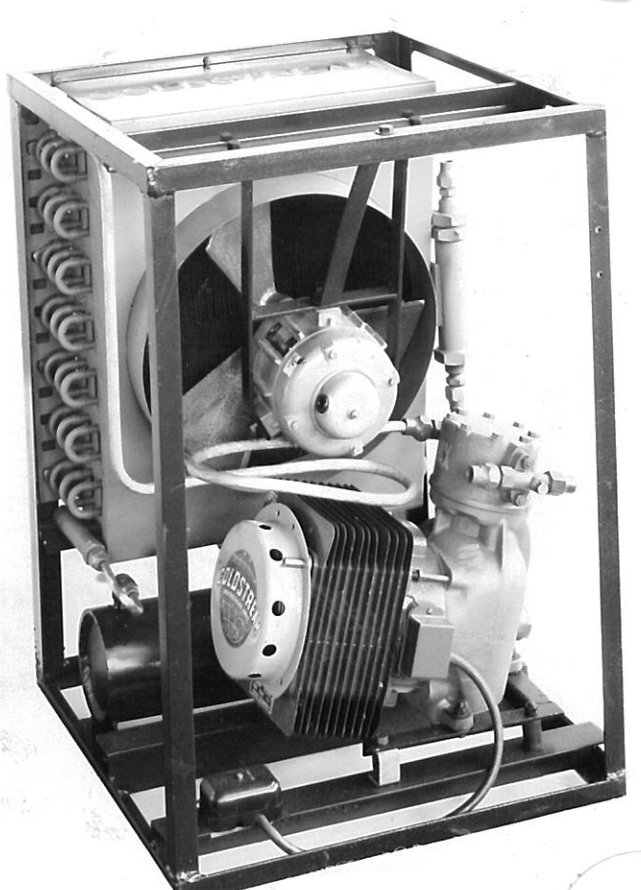
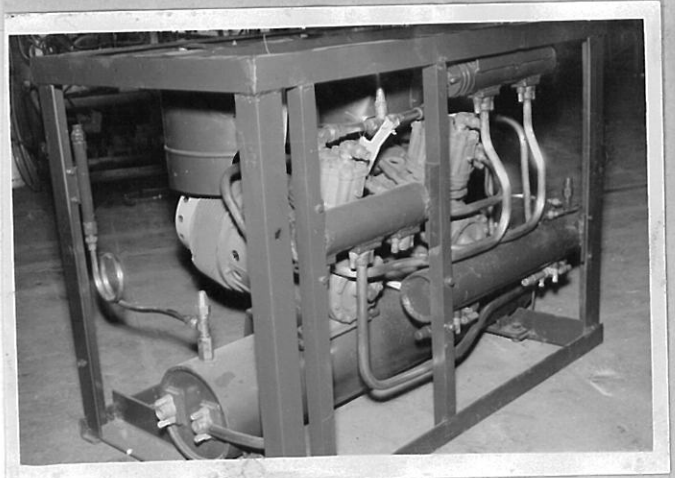
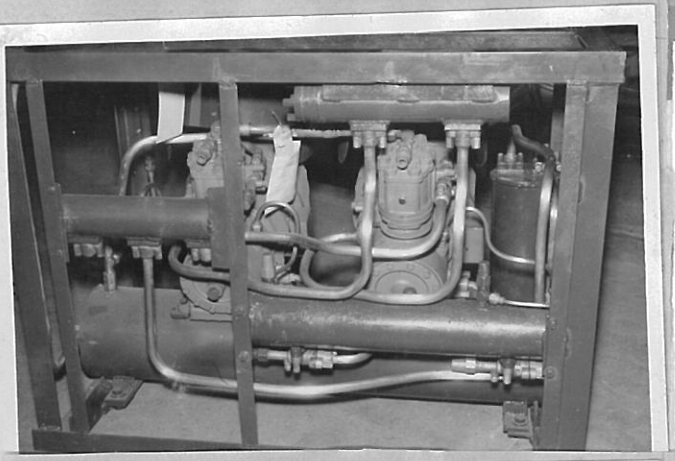




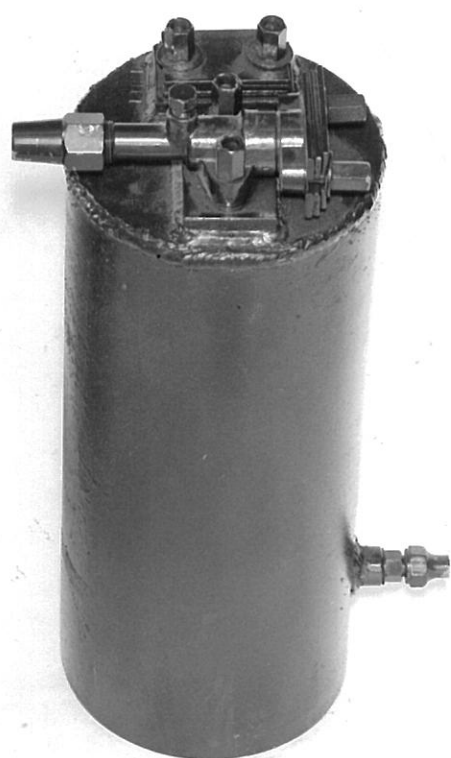
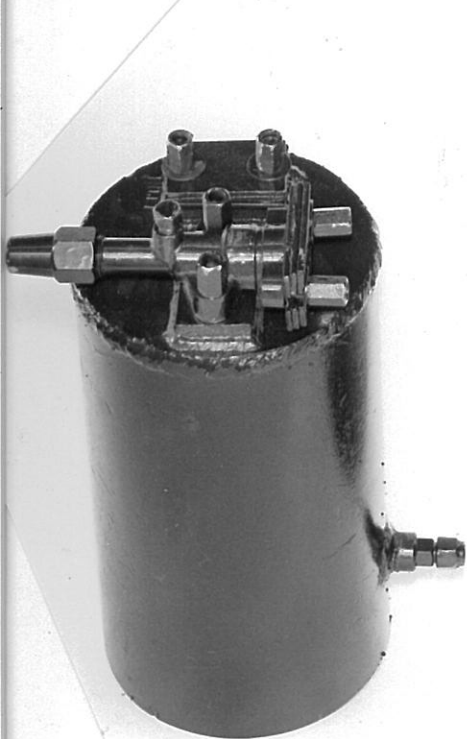
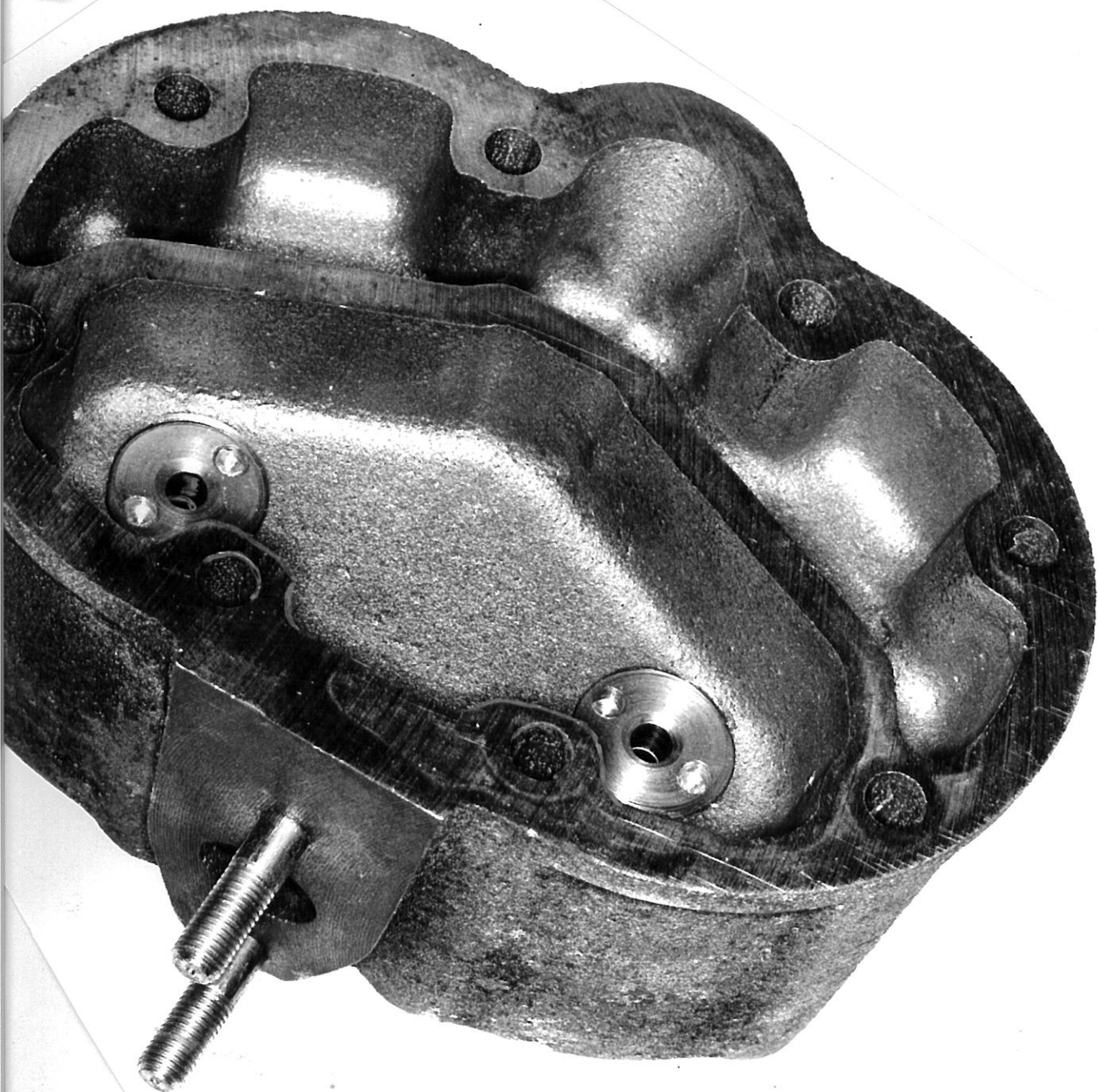
P8M669-2



NK12 @ condenser  
1.2.20. Ur

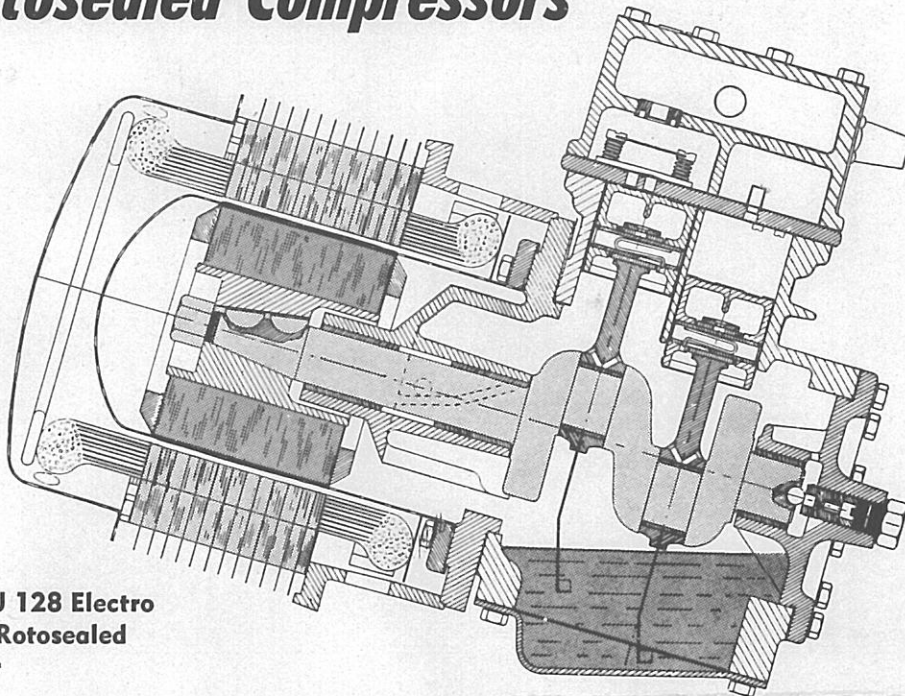






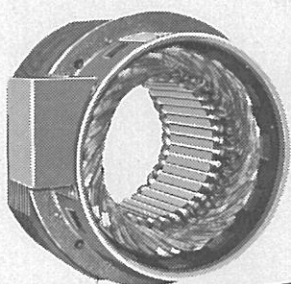


# COLDSTREAM *Electro Magnetically* Driven *Rotosealed* Compressors



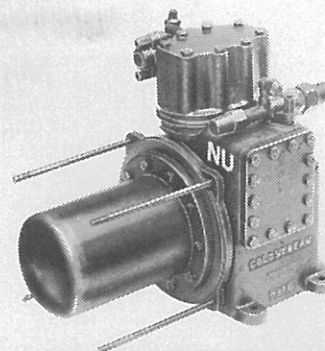
Sectional drawing of NU 128 Electro Magnetically Driven Rotosealed Compressor

**YOUR REFRIGERATION SYSTEM IS PROTECTED FROM CONTAMINATION WITH THE SLEEVE THAT KEEPS THE BURNOUT — OUT!**

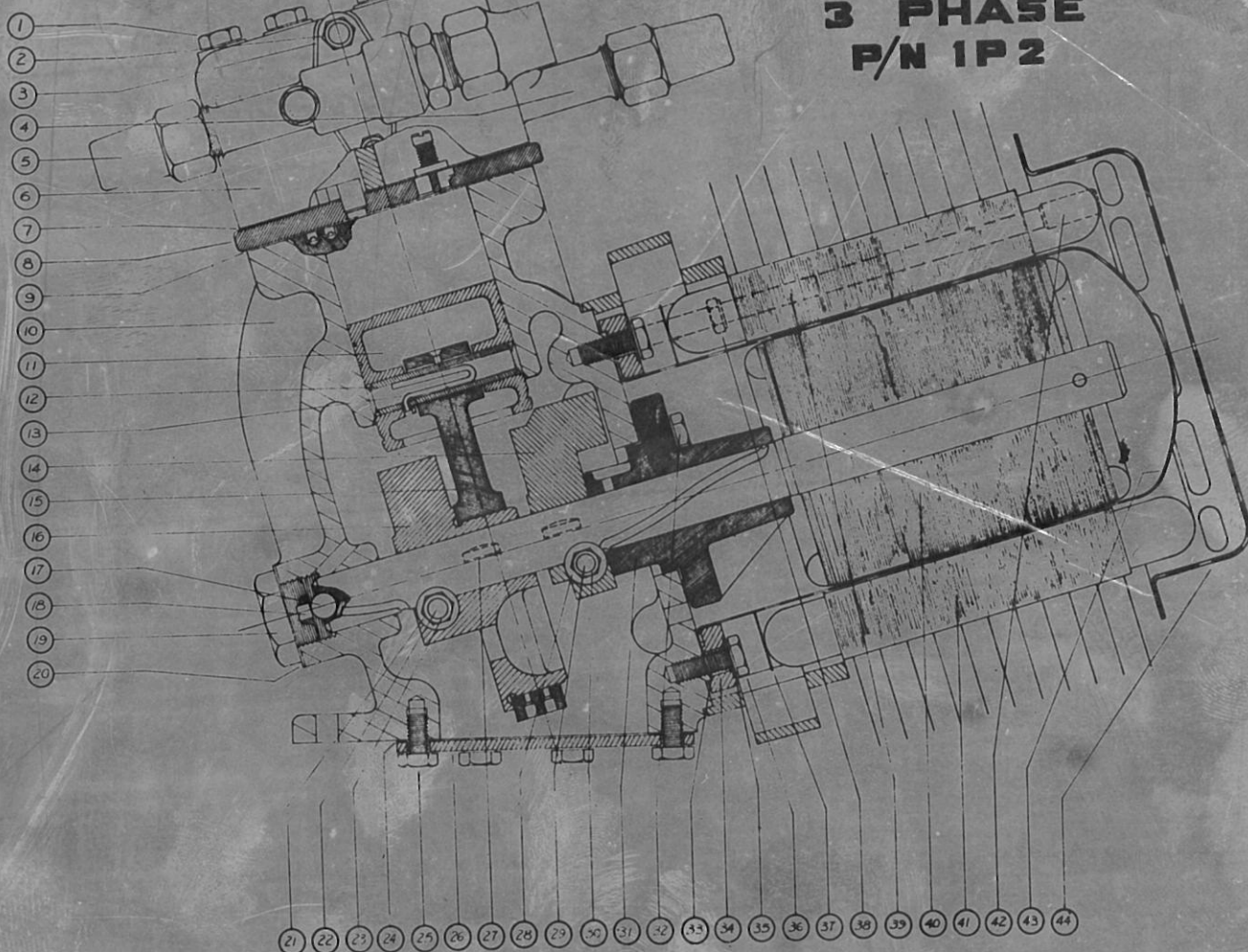


- Unscrew the nuts
- Disconnect the wires
- The stator slides off the sleeve
- The refrigerant system and mechanical parts remain sealed

Valve Plate can be checked safely on site without removal to the factory

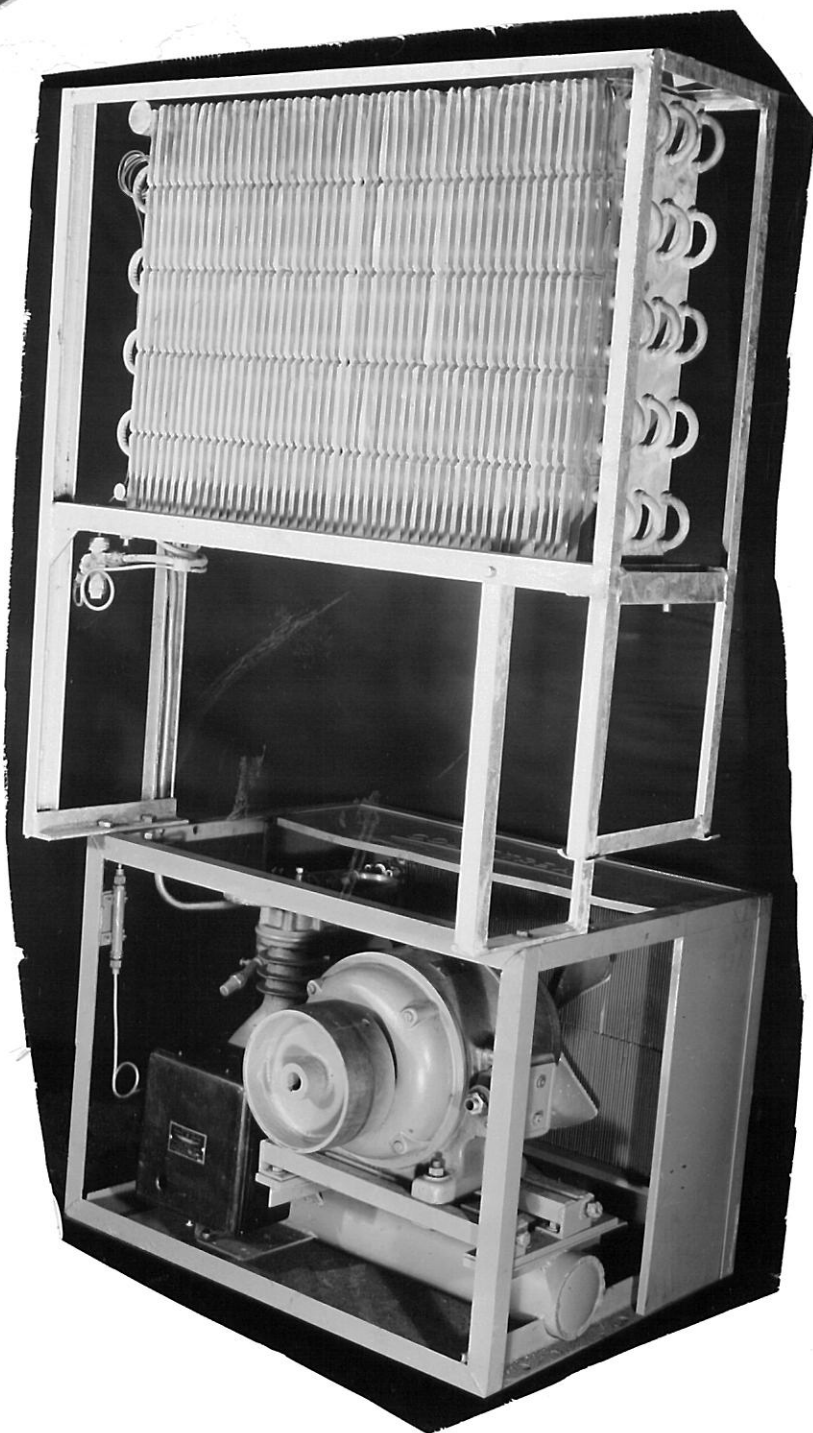
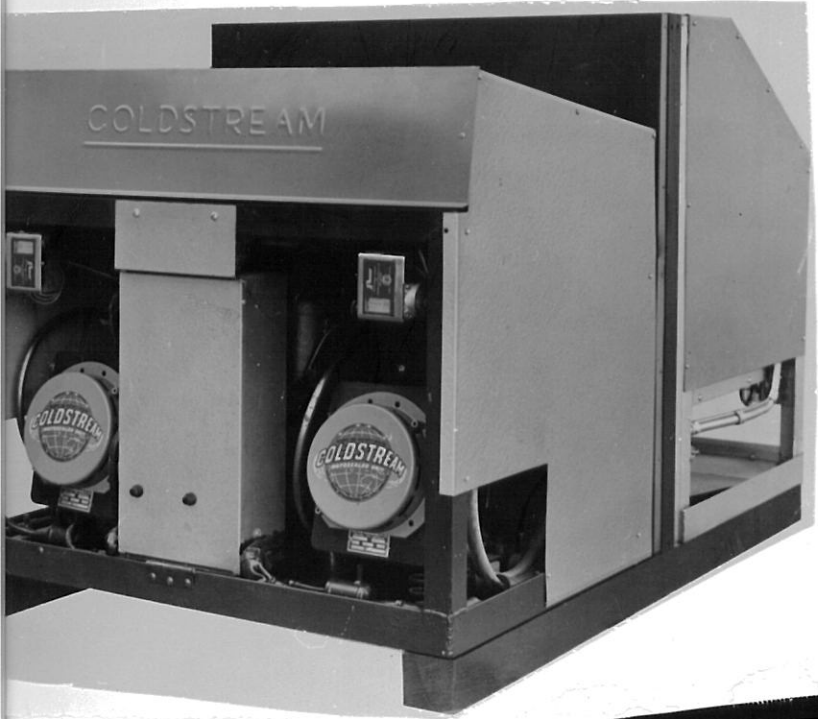


## MODEL NZ COLDSTREAM ROTOSEALED COMPRESSOR 3 PHASE P/N 1P2

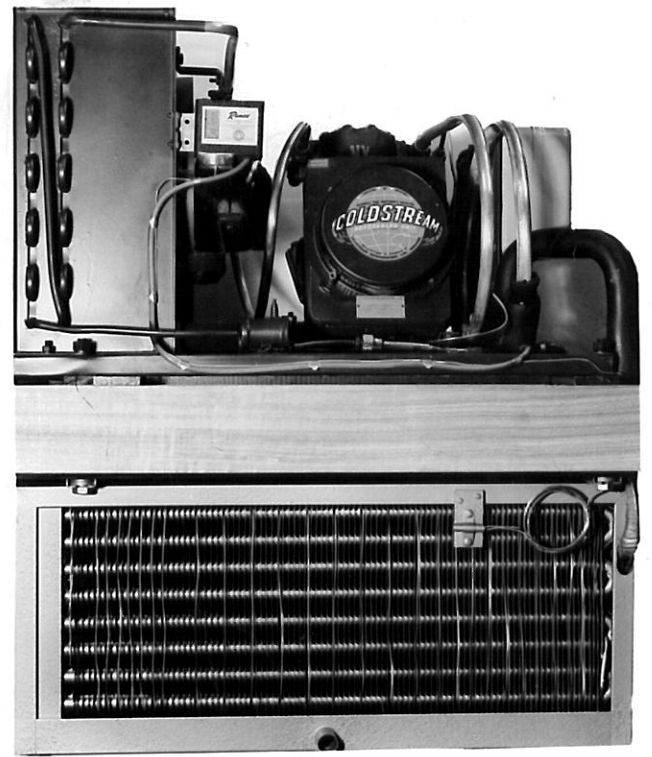
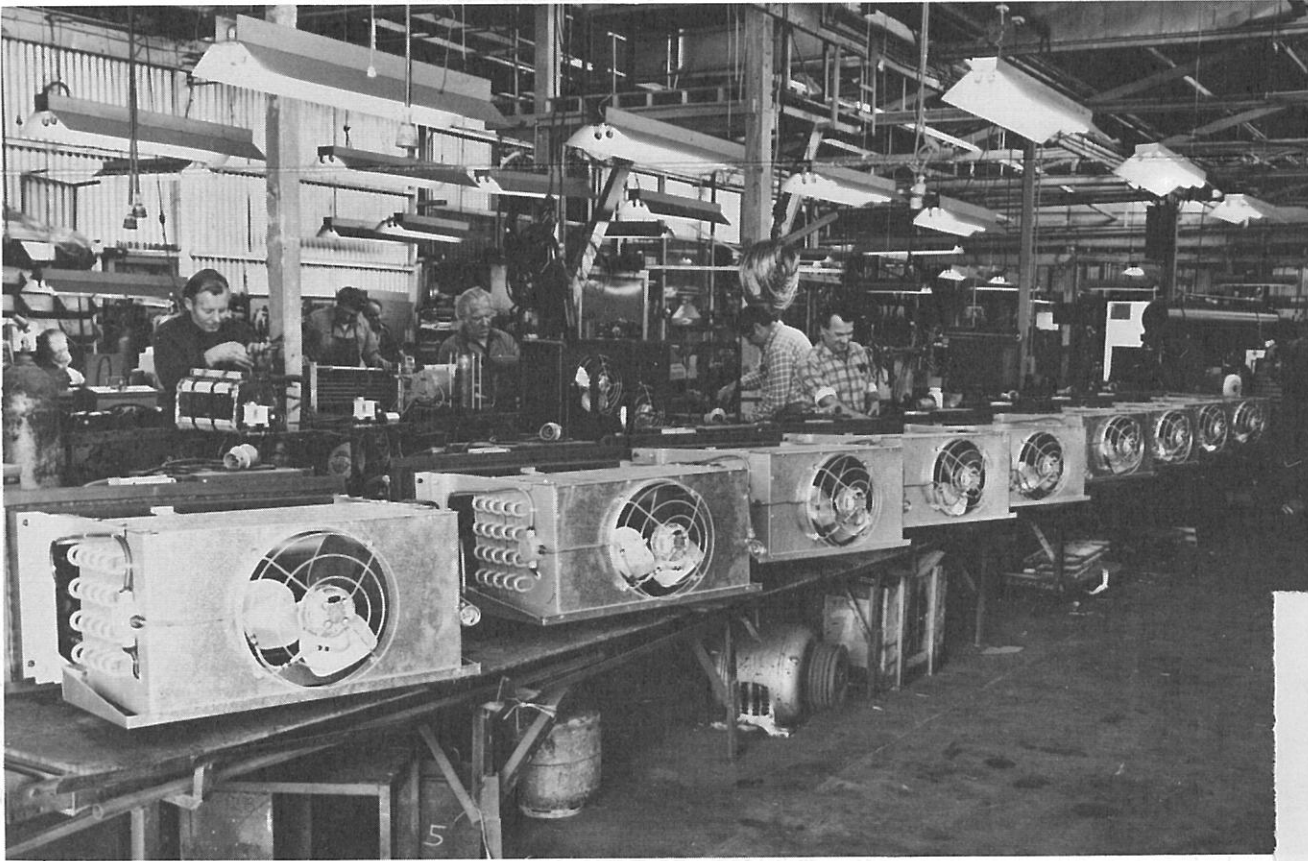


| ITEM | PART NO. | PART NAME                         | QTY. |
|------|----------|-----------------------------------|------|
| 1    | 85WU24   | BOLT - CYLINDER HEAD SECURING     | 8    |
| 2    | 78A1     | NUT - SERVICE VALVE SECURING      | 4    |
| 3    | 61227    | GASKET - SERVICE VALVE            | 1    |
| 4    | 91A16    | 3/8 SERVICE VALVE ASSY            | 1    |
| 5    | 91A13    | 3/8 SERVICE VALVE ASSY            | 1    |
| 6    | 67218    | CYLINDER HEAD ASSY                | 1    |
| 7    | 61E87    | GASKET - CYLINDER HEAD            | 1    |
| 8    | 6C49     | VALVE PLATE ASSY                  | 1    |
| 9    | 61B14    | GASKET - VALVE PLATE              | 1    |
| 10   | 2A21     | CRANKCASE                         | 1    |
| 11   | 13CA2    | PISTON                            | 1    |
| 12   | 16A57    | PIN - GUDGEON                     | 1    |
| 13   | 40A58    | CLIP - GUDGEON PIN SECURING       | 1    |
| 14   | 174A9    | BOB - WEIGHT                      | 1    |
| 15   | 11A24    | CONNECTING ROD                    | 1    |
| 16   | 10A12    | ECCENTRIC                         | 1    |
| 17   | 22A1     | 3/8 DIA. STEEL BALL               | 1    |
| 18   | 15B61    | ROLLER - THRUST                   | 1    |
| 19   | 19A8     | PLUG - THRUST                     | 1    |
| 20   | 92B3     | WASHER - 1/8" x 1" x 22G COPPER   | 1    |
| 21   | 92C3     | WASHER - ECCENTRIC LOCKING        | 1    |
| 22   | 16C108   | PIN - COTTER - ECCENTRIC          | 1    |
| 23   | 78A1     | NUT - ECCENTRIC LOCKING           | 1    |
| 24   | 61E65    | GASKET - SUMP PLATE               | 1    |
| 25   | 85WU9    | SETScrew - SUMP PLATE SECURING    | 12   |
| 26   | 80B11    | PLATE - SUMP                      | 1    |
| 27   | 68A1     | KEY - N°5 WOODRUFF                | 2    |
| 28   | 92C3     | WASHER - BOB WEIGHT LOCKING       | 1    |
| 29   | 16C108   | PIN - COTTER - BOB WEIGHT         | 1    |
| 30   | 78A1     | NUT - BOB WEIGHT LOCKING          | 1    |
| 31   | 171A5    | BEARING - MAIN                    | 1    |
| 32   | 85WU9    | SETScrew - MAIN BEARING SECURING  | 4    |
| 33   | 61E66    | GASKET - GLAMPING RING            | 1    |
| 34   | 12D15    | RING - ROTOR SLEEVE CLAMPING      | 1    |
| 35   | 92L1     | WASHER - CLAMPING RING SETSCREW   | 8    |
| 36   | 85WU9    | SETScrew - CLAMPING RING SECURING | 8    |
| 37   | 12E31    | RING - STATOR INSULATION          | 1    |
| 38   | 78A5     | NUT - STATOR PULLING              | 2    |
| 39   | 84A17    | STUD - MOTOR MTG                  | 2    |
| 40   | 322A1    | ROTOR AND SHAFT ASSY              | 1    |
| 41   | 800F48   | STATOR ASSY                       | 1    |
| 42   | 78J24    | NUT - SPECIAL - STATOR CLAMPING   | 2    |
| 43   | 52F6     | SLEEVE - ROTOR                    | 1    |
| 44   | 45883    | COVER - STATOR WINDING            | 1    |
| 45   | 19D8     | PLUG - OIL FILLER (A)             | 1    |
| 49   | 31A34    | GASKET - OIL FILLER PLUG          | 1    |
| 50   | 61E27    | 3/8 SERVICE VALVE GASKET          | 1    |





Men working on the final assembly line at the Coldstream factory, Unley this month.



Assembling Freezer wall mounted package units, Water Coolers, Icemakers, Force Draft coolers, Remote condensers and a Liquid Chiller.

The Coldstream package unit AZ101-140F shown has a rating of 7,000 Btu/hr. in a minus 17.8°C room. (0°F.)

- They have been field tested in Indonesia and the rough arid regions of Australia.
- Used with 220, 380 and 415 Volt 50 and 60 cycle three phase power supplies.
- These Rotosealed package units like the rest of the range can be supplied with a variety of Voltages, phases and frequencies.
- Coldstream Rotosealed fully accessible wall and ceiling mounted package units are fully serviceable in the field.

**COLDSTREAM PTY. LIMITED**  
 Factory — 75 King William Road, Unley, 5061

|                 |                  |              |
|-----------------|------------------|--------------|
| <b>ADELAIDE</b> | <b>MELBOURNE</b> | <b>PERTH</b> |
| 71-0351         | 380-6707         | 65-5922      |

