

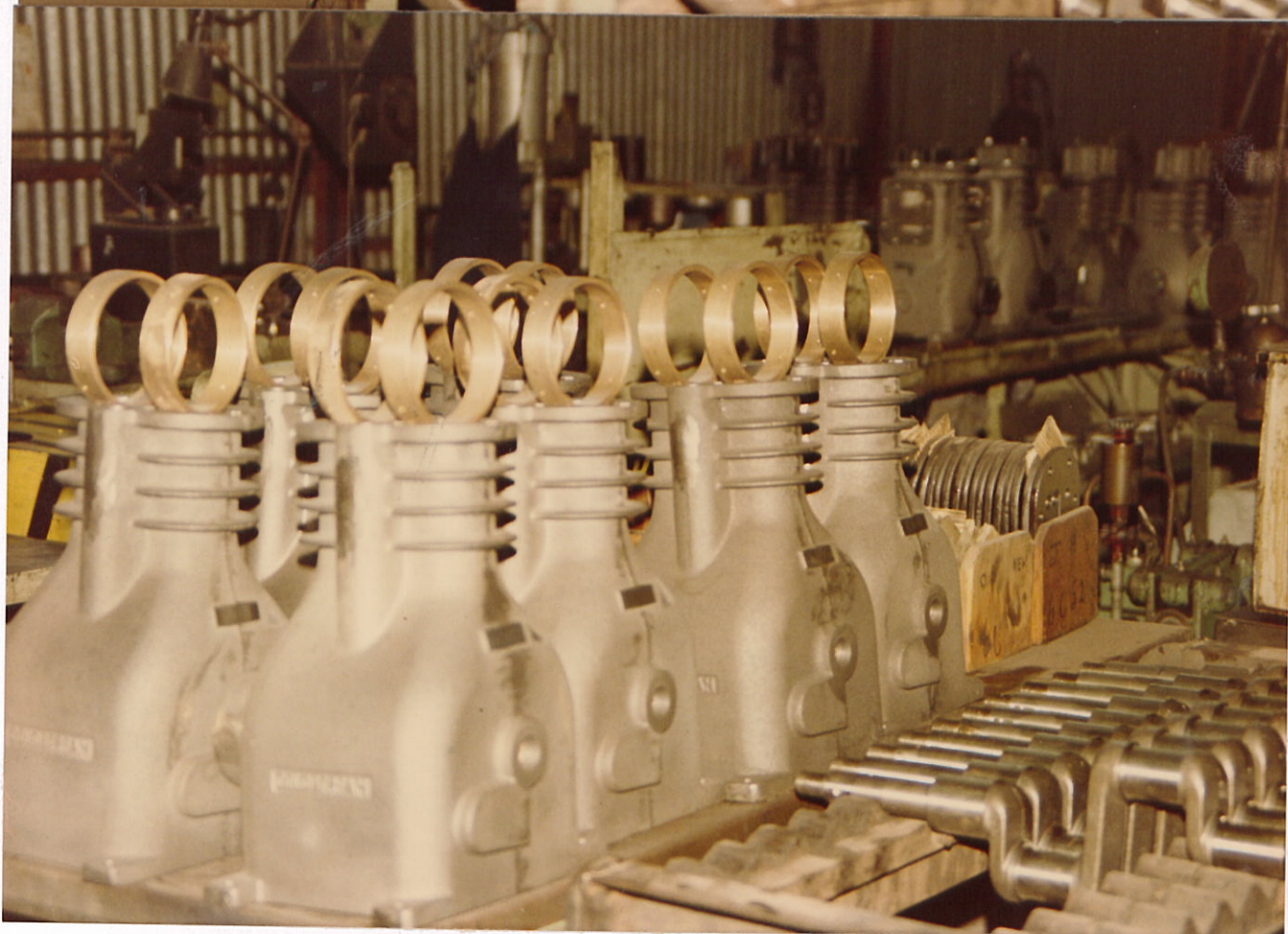
A BELT DRIVEN
REFRIGERATION
COMPRESSOR
PISTON TRAVELS
FURTHER IN ONE
YEAR than the
average car piston
moves while driving
a car 130,000 kilometre

The machines offered
for making the
compressor parts are
extremely accurate.

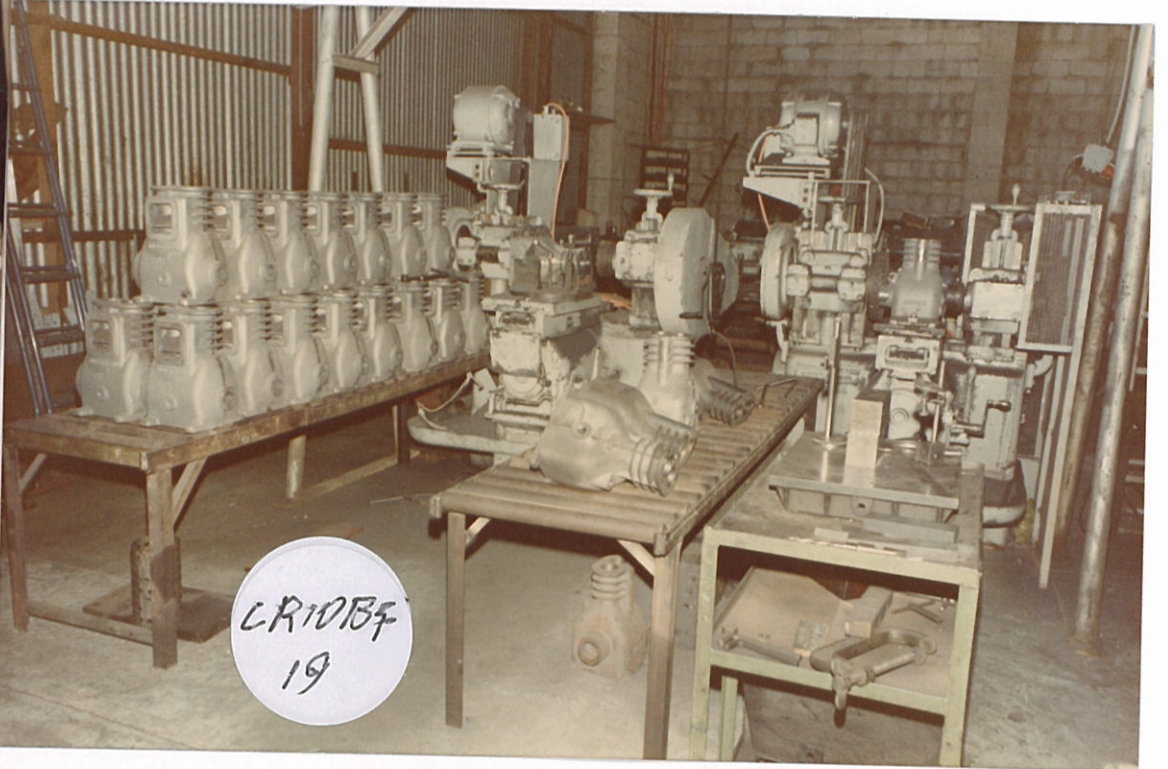
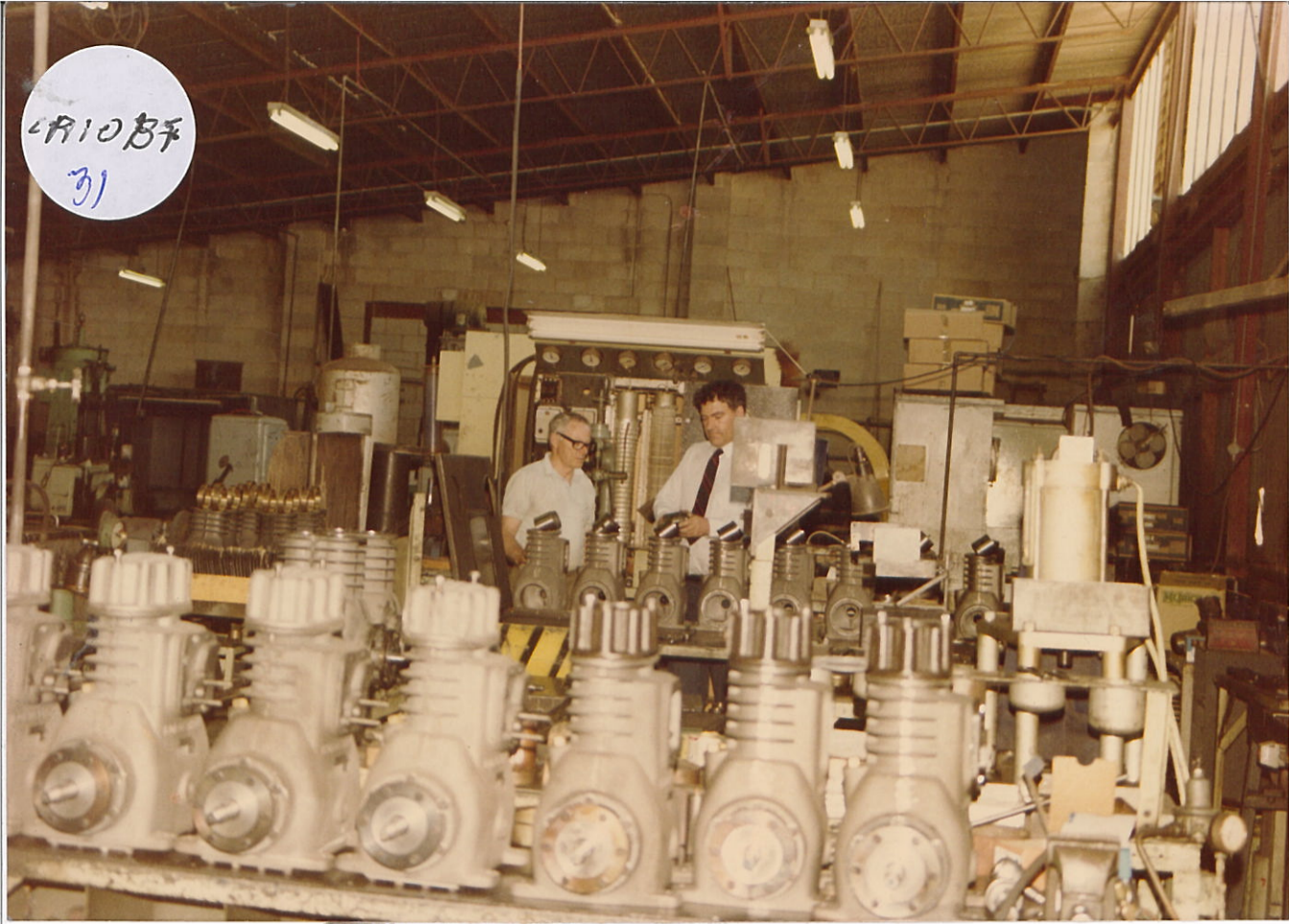
They have to be!



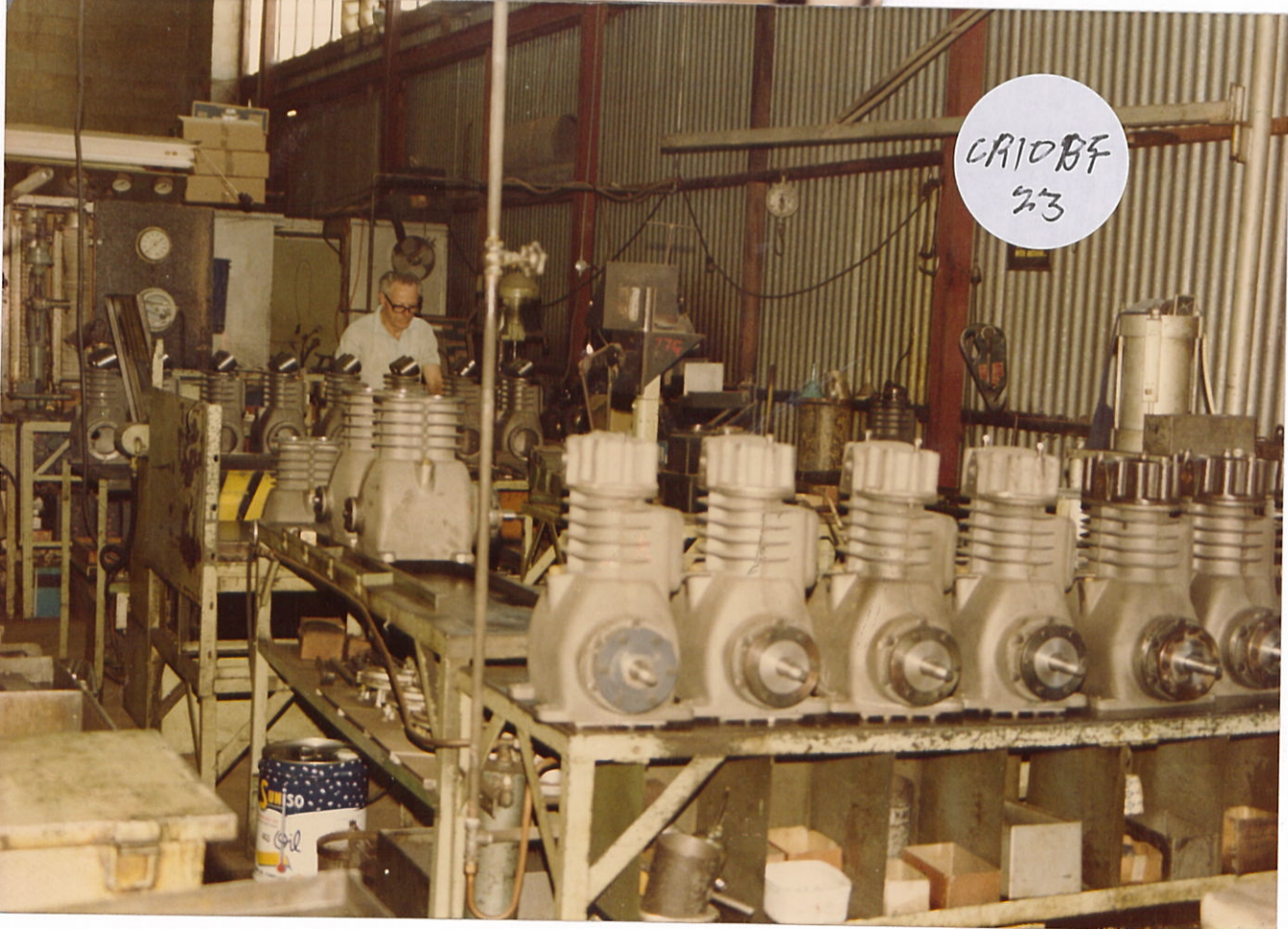
From the casting to the complete refrigerator.
Unmachined pistons, cylinder heads, front covers and valve plates.



CR10BF
31



CR10BF
19



CR10BF
23