

**SHEET NUMBER 27001A CROWN CAP
BOTTLING LINE FOR 330ML AND 650ML
BOTTLES, [BOTTLE CAPACITY BEYOND THIS IS DETERMINED BY
DIAMETER RATHER THAN BY HEIGHT.]
MAJOR ITEMS INCLUDE LABELLER—RINSER---FILLER / CAPPER WITH JOINING
BOTTLE CONVEYORS. COVERS AN AREA OF 4.5M X. 5.5M [SHAPE CAN BE
CHANGED] CAPACITY-- RUN AT THE RATE OF 800 BOTTLES PER HOUR WITH
TWO OPERATORS.**



PG 3 SHOW/RM.- MS 40. INDEX- C12

CORPORATE MACHINERY BROKERS

PO BOX 1043 KENSINGTON GARDENS S.A. 5068

TEL. 042 8832 423

TEL.08-84310430

E. marketing@machineryshowroom.net

WEB. www.machineryshowroom.net

ADD GST TO ALL PRICES

ALL SALES ARE SUBJECT TO OUR ANNEXURE 'A' CONDITIONS OF SALE.

Basic Specs:

- Currently in a U shaped configuration, 4.5m x 5.5m
- Line currently configured for 330ml bottles, can be reconfigured for larger sizes some change parts included for 650ml bottles.
- With current feed in/out we run the line quite slowly at around 800 bottles per hour with two operators. Individual machines are capable of faster speeds.
- All conveyors, motors included in sale.
- Vacuum pump included in sale.
- NOT INCLUDED - Product pump, date coder, PRV for filler surge tank, vacuum tank for pre-evacuation (currently using a 50L keg).

Labeller:

- Impresstik 2000 VAC
- Single head
- Capable of 100 bottles per minute

Rinser:

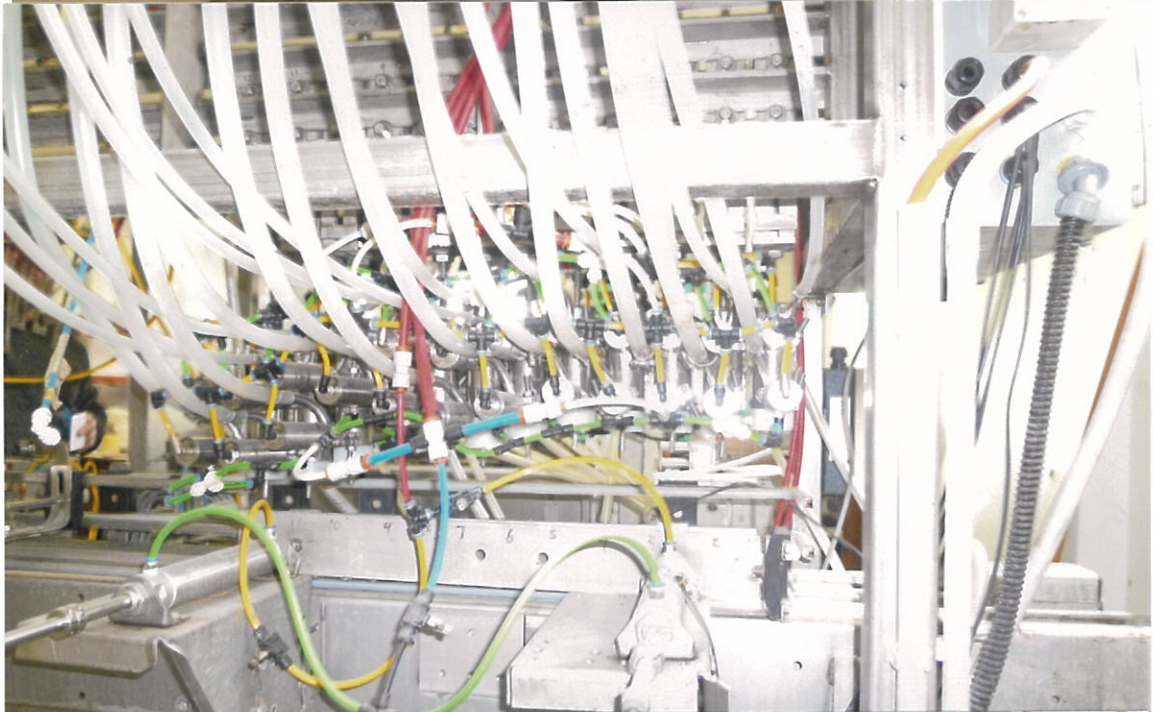
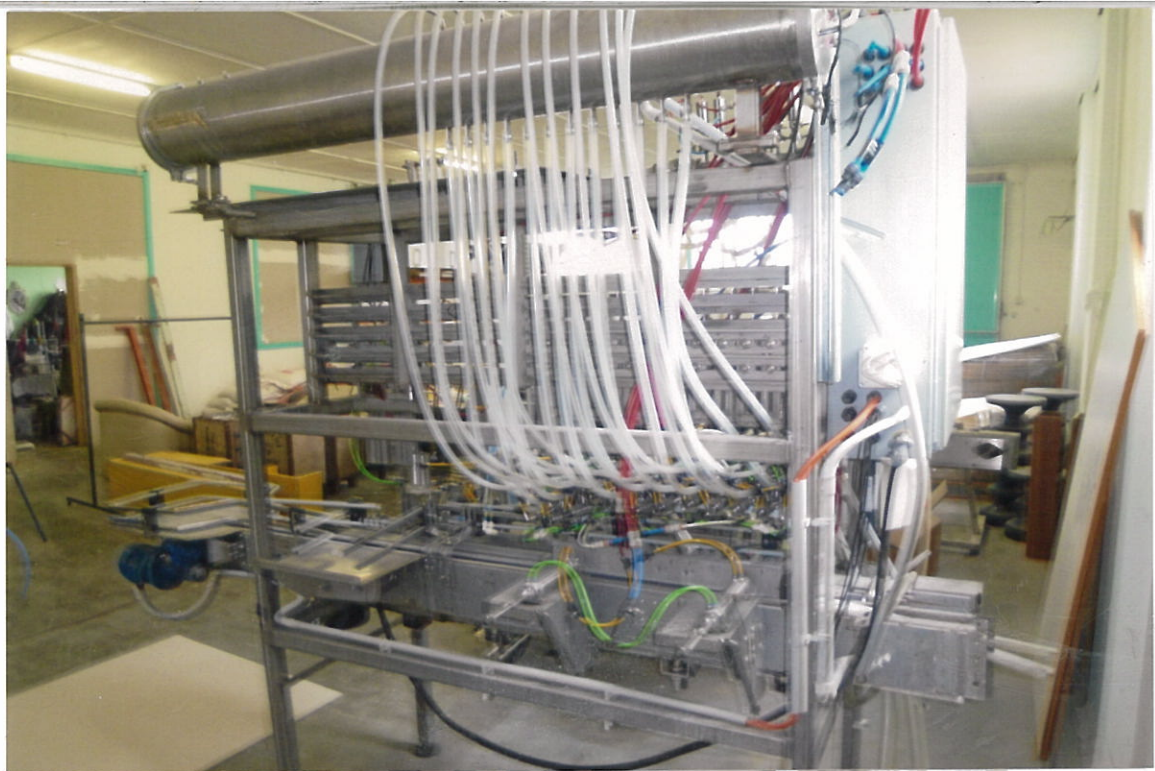
- 16 Head PPM, currently configured as 12 head.
- Rinse time user configurable.

Filler/Capper:

- 12 Head PPM Evolution Inline Counter Pressure Filler
- Double pre-evacuation
- Currently filling beer, suitable for other still or sparkling liquids
- Single head capper (machine capable of running 2 head capper, parts included to achieve this but some repairs required)









PROCESS & PACKAGING MACHINE CORP
1851 Grogan Ave., Suite F.
Merced, CA 95340
VOICE: 209-383-1109
FAX: 209-383-3367
WEB: www.ppmconcepts.com
EMAIL: ppmconcepts.com





